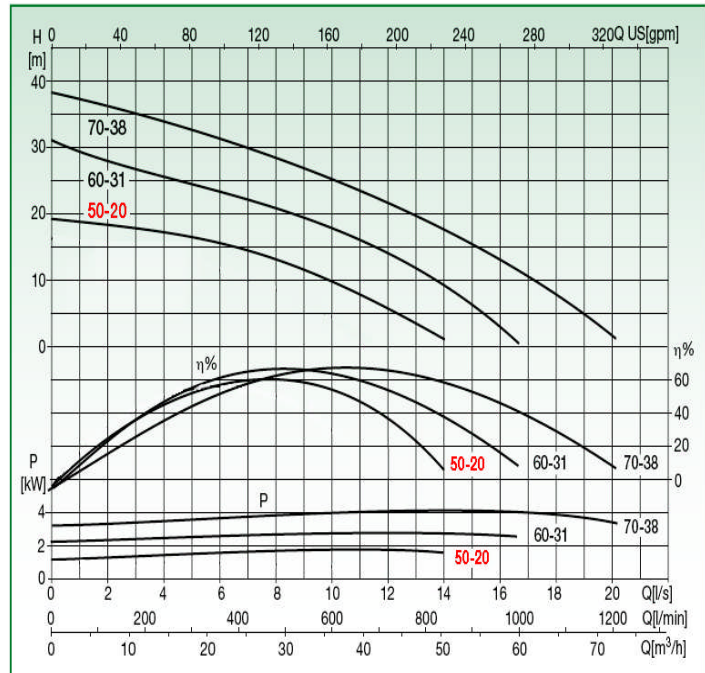


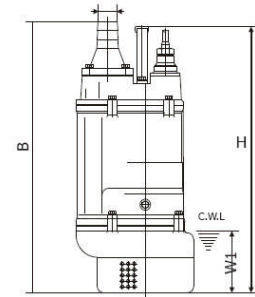
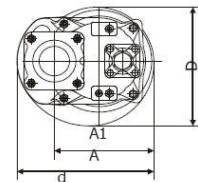
TITAN 2GL 50-20-DN80/3"	
Requested data	
Flow	m ³ /h
Head	m
Fluid	Mud & waste water
Pumpe type	Single head pump
No. of pumps	1
Operating pump data	
Flow	10-50 m ³ /h
Head	5-17 m
Shaft power	2,2 kW
Efficiency	60 %
Head H(Q=0)	20 m
Discharge connection	DN80/3"
Installation	Submersed automatic coupled
Impeller	Vortex
Motor data	
Frequency	50 Hz
Rated voltage	400 V
Nominal speed	2900 1/min
Number of poles	2
Rated power P2	2,2 kW
Rated current	
Motor type	3~
Insulation class	F
Degree of protection	IP 68
Operating limits	
Starts per hour max.	15
Maximum temperature of pumped fluid	40 °C
Max. Density	998 kg/m ³
Max. viscosity	1 mm ² /s
General data	
Weight	36 kg



Operating data ISO 9906 GRADE 2

Q [m ³ /h]	H [m]	P [kW]	Eff. [%]	NPSH [m]

Dimensions mm



Model	d	A	A1	B	D	H	W1
TITAN 2GL 50-20	80	235	173	517	216	486	120

Remarks:

Date	Page	Offer no.	Pos.no 1.1
------	------	-----------	---------------

TITAN 2GL 60-31-DN80/3"

Requested data	
Flow	m ³ /h
Head	m
Fluid	Mud & waste water
Pumpe type	Single head pump
No. of pumps	1

Operating pump data	
Flow	10-55 m ³ /h
Head	5-27 m
Shaft power	3,7 kW
Efficiency	67 %
Head H(Q=0)	31 m
Discharge connection	DN80/3"
Installation	Submersed automatic coupled
Impeller	Vortex

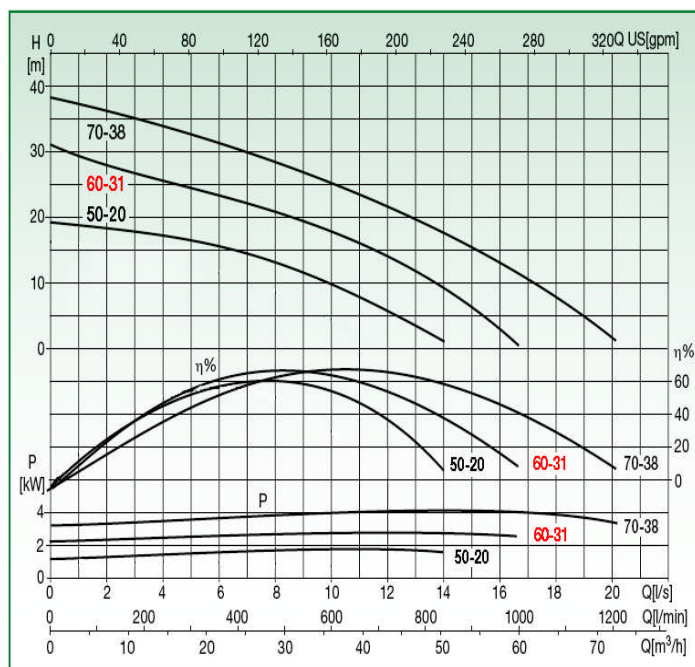
Motor data	
Frequency	50 Hz
Rated voltage	400 V
Nominal speed	2900 1/min
Number of poles	2
Rated power P2	3,7 kW
Rated current	
Motor type	3~
Insulation class	F
Degree of protection	IP 68

Operating limits	
Starts per hour max.	15
Maximum temperature of pumped fluid	40 °C
Max. Density	998 kg/m ³
Max. viscosity	1 mm ² /s

General data	
Weight	60 kg

Materials

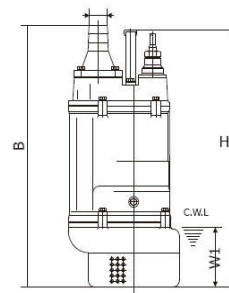
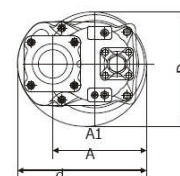
Pump casing	Cast iron
Impeller	High Chrome Alloy
Wear ring	Steel/rubber
Suction casing	Cast iron
Mech. seal on pump side	Silicon carbide/Ceramics
Oil chamber	Cast iron
Motor casing	Cast iron
Shaft	Stainless steel
Thermal probes	Yes
Conductivity probe	Yes
Mech. seal on motor side	Graphite/Ceramics
Handle	Stainless steel
Power supply cable	8 m
Screws and nuts	Stainless steel



Operating data

ISO 9906 GRADE 2				
Q [m ³ /h]	H [m]	P [kW]	Eff. [%]	NPSH [m]

Dimensions mm



Model	d	A	A1	B	D	H	W1
TITAN 2GL 60-31	80	283	208	628	252	638	150

Remarks:

Date	Page	Offer no.	Pos.no 1.1
------	------	-----------	---------------

TITAN 2GL 70-38-DN80/3"

Requested data

Flow	m ³ /h
Head	m
Fluid	Mud & waste water
Pumpe type	Single head pump
No. of pumps	1

Operating pump data

Flow	10-65 m ³ /h
Head	7-35 m
Shaft power	5,5 kW
Efficiency	69 %
Head H(Q=0)	38 m
Discharge connection	DN80/3"
Installation	Submersed automatic coupled
Impeller	Vortex

Motor data

Frequency	50 Hz
Rated voltage	400 V
Nominal speed	2900 1/min
Number of poles	2
Rated power P2	5,5 kW
Rated current	
Motor type	3~
Insulation class	F
Degree of protection	IP 68

Operating limits

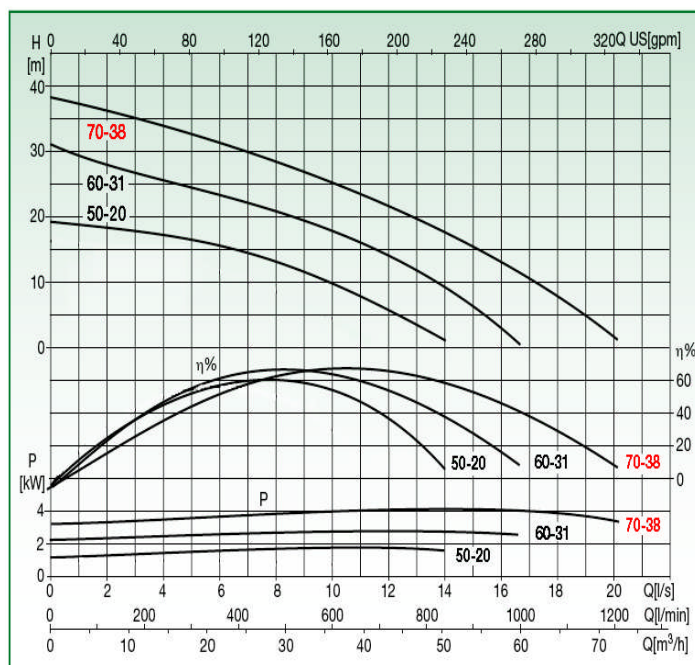
Starts per hour max.	15
Maximum temperature of pumped fluid	40 °C
Max. Density	998 kg/m ³
Max. viscosity	1 mm ² /s

General data

Weight	77 kg
--------	-------

Materials

Pump casing	Cast iron
Impeller	High Chrome Alloy
Wear ring	Steel/rubber
Suction casing	Cast iron
Mech. seal on pump side	Silicon carbide/Ceramics
Oil chamber	Cast iron
Motor casing	Cast iron
Shaft	Stainless steel
Thermal probes	Yes
Conductivity probe	Yes
Mech. seal on motor side	Graphite/Ceramics
Handle	Stainless steel
Power supply cable	8 m
Screws and nuts	Stainless steel

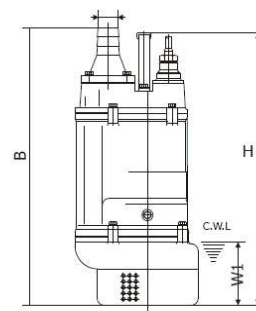
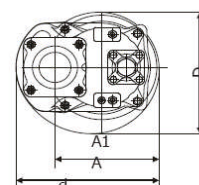


Operating data

ISO 9906 GRADE 2

Q [m ³ /h]	H [m]	P [kW]	Eff. [%]	NPSH [m]

Dimensions mm



Model	d	A	A1	B	D	H	W1
TITAN 2GL 70-38	80	306	218	671	259	688	150

Remarks:

Date	Page	Offer no.	Pos.no 1.1
------	------	-----------	---------------

TITAN 2GL 90-45-DN100/4"

Requested data

Flow	m ³ /h
Head	m
Fluid	Mud & waste water
Pumpe type	Single head pump
No. of pumps	1

Operating pump data

Flow	15-85 m ³ /h
Head	7-42 m
Shaft power	7,5 kW
Efficiency	63 %
Head H(Q=0)	45 m
Discharge connection	DN100/4"
Installation	Submersed automatic coupled
Impeller	Vortex

Motor data

Frequency	50 Hz
Rated voltage	400 V
Nominal speed	2900 1/min
Number of poles	2
Rated power P2	7,5 kW
Rated current	
Motor type	3~
Insulation class	F
Degree of protection	IP 68

Operating limits

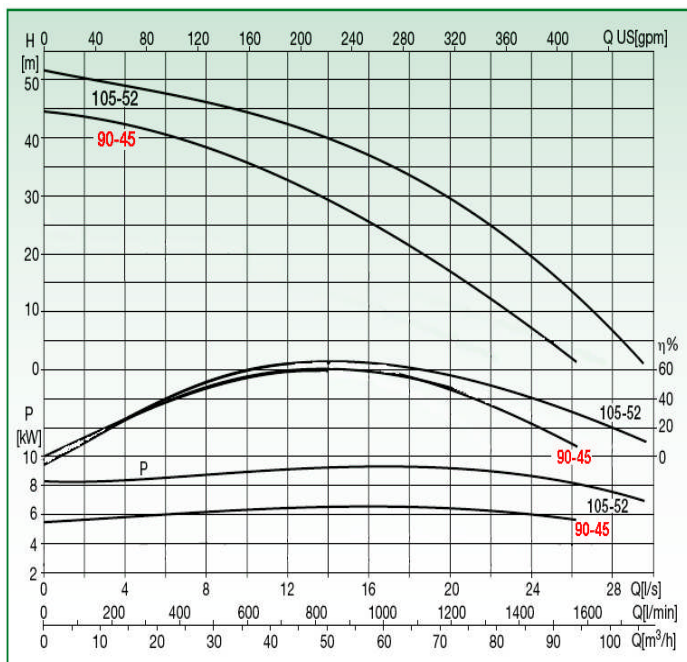
Starts per hour max.	15
Maximum temperature of pumped fluid	40 °C
Max. Density	998 kg/m ³
Max. viscosity	1 mm ² /s

General data

Weight	105 kg
--------	--------

Materials

Pump casing	Cast iron
Impeller	High Chrome Alloy
Wear ring	Steel/rubber
Suction casing	Cast iron
Mech. seal on pump side	Silicon carbide/Ceramics
Oil chamber	Cast iron
Motor casing	Cast iron
Shaft	Stainless steel
Thermal probes	Yes
Conductivity probe	Yes
Mech. seal on motor side	Graphite/Ceramics
Handle	Stainless steel
Power supply cable	8 m
Screws and nuts	Stainless steel

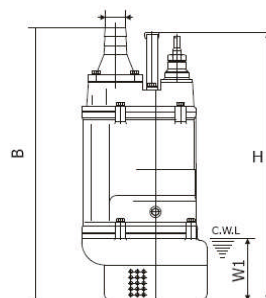
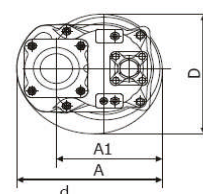


Operating data

ISO 9906 GRADE 2

Q [m ³ /h]	H [m]	P [kW]	Eff. [%]	NPSH [m]

Dimensions mm



Model	d	A	A1	B	D	H	W1
TITAN 2GL 90-45	100	330	240	764	314	676	190

Remarks:

Date	Page	Offer no.	Pos.no 1.1
------	------	-----------	---------------

TITAN 2GL 105-52-DN100/4"

Requested data

Flow	m ³ /h
Head	m
Fluid	Mud & waste water
Pumpe type	Single head pump
No. of pumps	1

Operating pump data

Flow	15-100 m ³ /h
Head	7-48 m
Shaft power	11 kW
Efficiency	67 %
Head H(Q=0)	52 m
Discharge connection	DN100/4"
Installation	Submersed automatic coupled
Impeller	Vortex

Motor data

Frequency	50 Hz
Rated voltage	400 V
Nominal speed	2900 1/min
Number of poles	2
Rated power P2	11 kW
Rated current	
Motor type	3~
Insulation class	F
Degree of protection	IP 68

Operating limits

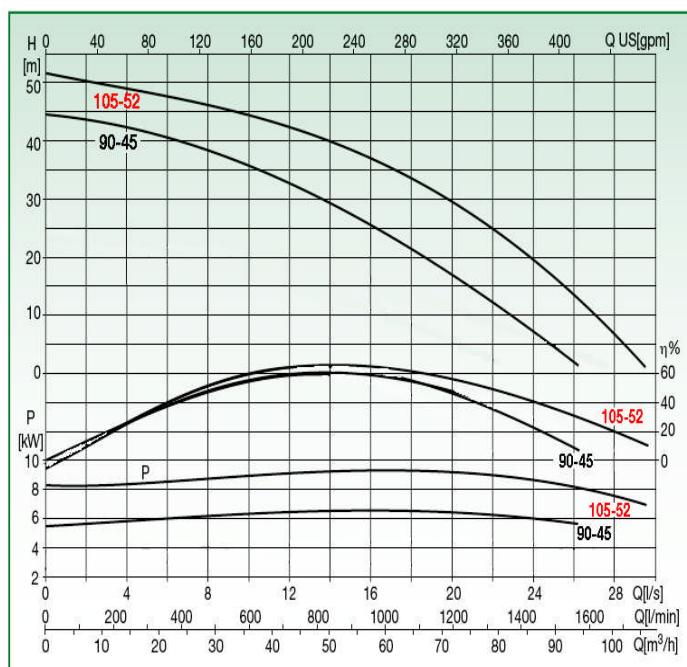
Starts per hour max.	15
Maximum temperature of pumped fluid	40 °C
Max. Density	998 kg/m ³
Max. viscosity	1 mm ² /s

General data

Weight	130 kg
--------	--------

Materials

Pump casing	Cast iron
Impeller	High Chrome Alloy
Wear ring	Steel/rubber
Suction casing	Cast iron
Mech. seal on pump side	Silicon carbide/Ceramics
Oil chamber	Cast iron
Motor casing	Cast iron
Shaft	Stainless steel
Thermal probes	Yes
Conductivity probe	Yes
Mech. seal on motor side	Graphite/Ceramics
Handle	Stainless steel
Power supply cable	8 m
Screws and nuts	Stainless steel

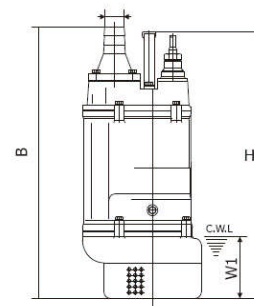
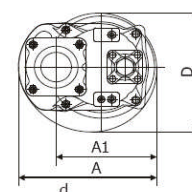


Operating data

ISO 9906 GRADE 2

Q [m ³ /h]	H [m]	P [kW]	Eff. [%]	NPSH [m]

Dimensions mm

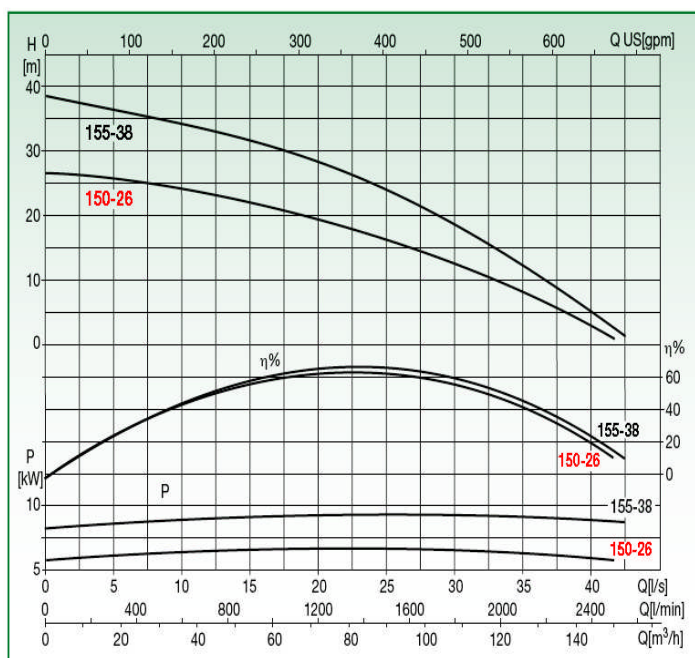


Model	d	A	A1	B	D	H	W1
TITAN 2GL 105-52	100	373	255	807	350	695	190

Remarks:

Date	Page	Offer no.	Pos.no 1.1
------	------	-----------	---------------

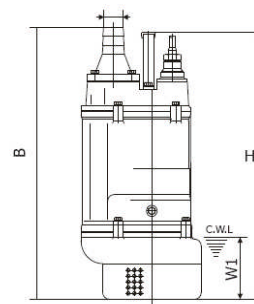
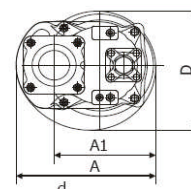
TITAN 2GL 150-26-DN150/6"	
Requested data	
Flow	m ³ /h
Head	m
Fluid	Mud & waste water
Pumpe type	Single head pump
No. of pumps	1
Operating pump data	
Flow	20-135 m ³ /h
Head	5-25 m
Shaft power	7,5 kW
Efficiency	62 %
Head H(Q=0)	27 m
Discharge connection	DN150/6"
Installation	Submersed automatic coupled
Impeller	Vortex
Motor data	
Frequency	50 Hz
Rated voltage	400 V
Nominal speed	2900 1/min
Number of poles	2
Rated power P2	7,5 kW
Rated current	
Motor type	3~
Insulation class	F
Degree of protection	IP 68
Operating limits	
Starts per hour max.	15
Maximum temperature of pumped fluid	40 °C
Max. Density	998 kg/m ³
Max. viscosity	1 mm ² /s
General data	
Weight	106 kg



Operating data

ISO 9906 GRADE 2				
Q [m ³ /h]	H [m]	P [kW]	Eff. [%]	NPSH [m]

Dimensions mm



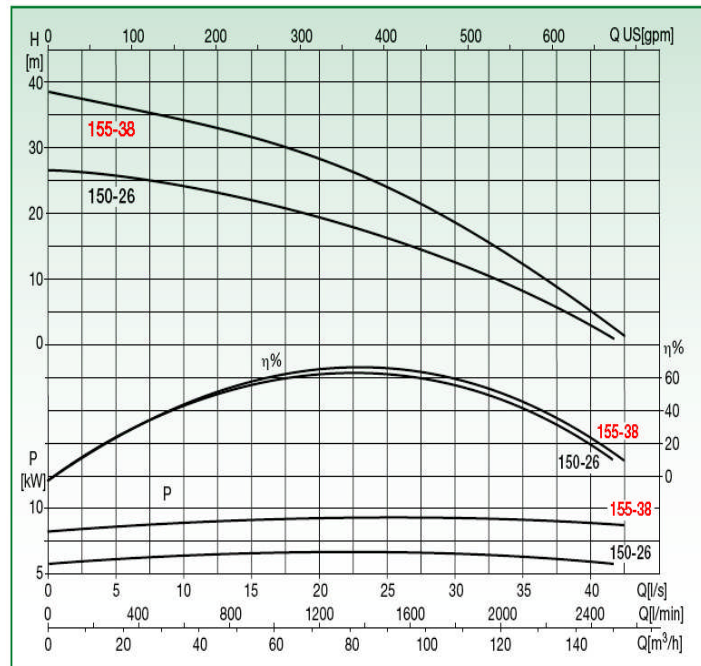
Model	d	A	A1	B	D	H	W1
TITAN 2GL 150-26	150	330	240	790	314	676	190

Remarks:

Date	Page	Offer no.	Pos.no 1.1
------	------	-----------	---------------

TITAN 2GL 155-38-DN150/6"

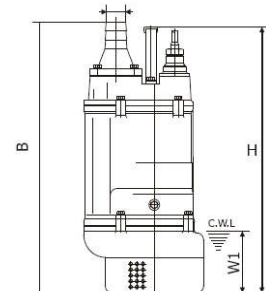
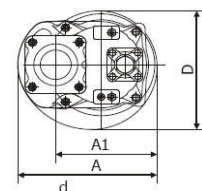
Requested data	
Flow	m ³ /h
Head	m
Fluid	Mud & waste water
Pumpe type	Single head pump
No. of pumps	1
Operating pump data	
Flow	20-135 m ³ /h
Head	7-36 m
Shaft power	11 kW
Efficiency	68 %
Head H(Q=0)	38 m
Discharge connection	DN150/6"
Installation	Submersed automatic coupled
Impeller	Vortex
Motor data	
Frequency	50 Hz
Rated voltage	400 V
Nominal speed	2900 1/min
Number of poles	2
Rated power P2	11 kW
Rated current	
Motor type	3~
Insulation class	F
Degree of protection	IP 68
Operating limits	
Starts per hour max.	15
Maximum temperature of pumped fluid	40 °C
Max. Density	998 kg/m ³
Max. viscosity	1 mm ² /s
General data	
Weight	133 kg



Operating data ISO 9906 GRADE 2

Q [m ³ /h]	H [m]	P [kW]	Eff. [%]	NPSH [m]

Dimensions mm



Model	d	A	A1	B	D	H	W1
TITAN 2GL 155-38	150	373	255	807	350	695	190

Remarks:

Date	Page	Offer no.	Pos.no 1.1
------	------	-----------	---------------